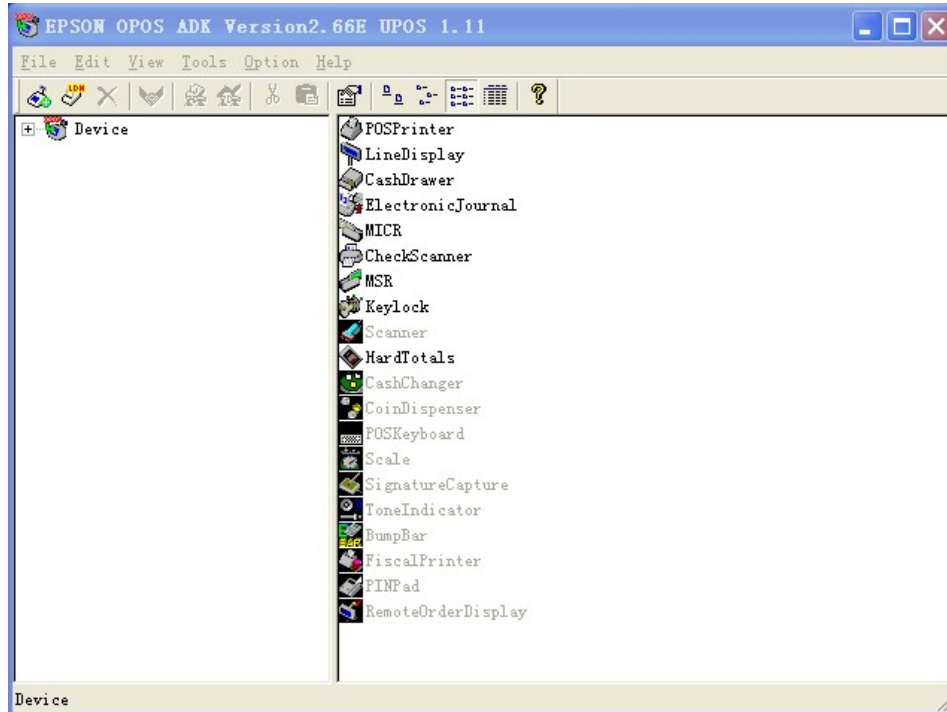


OPOSADK\V210E\ORIGINAL

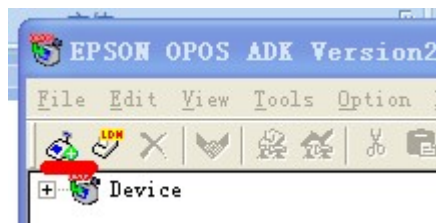


Step A: Install EPSON OPOS ADK Driver

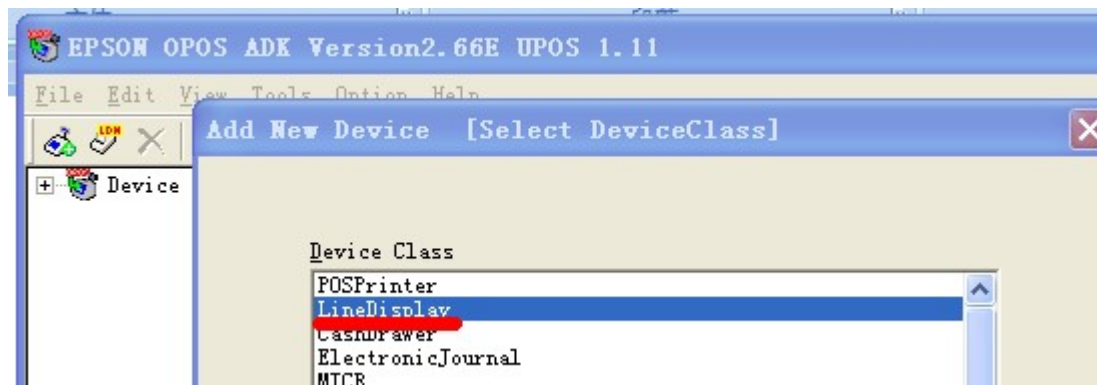
1、... \OPOSADK\V210E\ORIGINAL\Disk1\Setup.exe, after installed



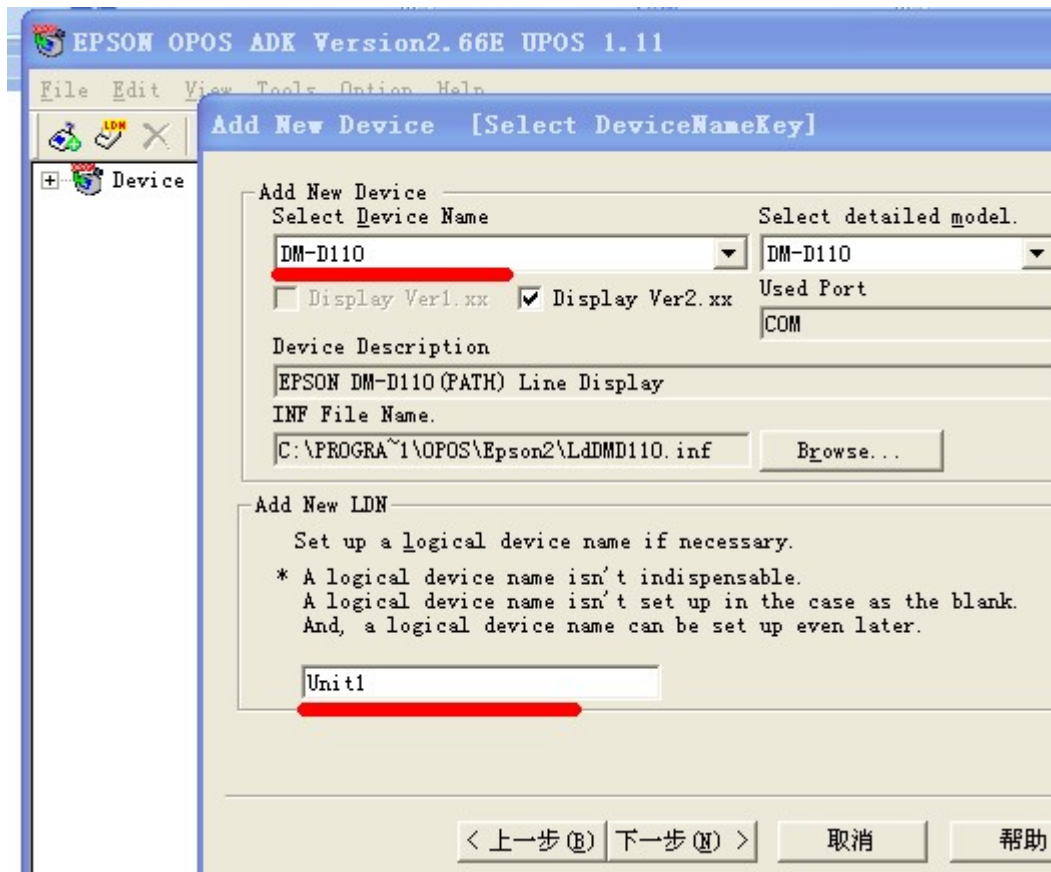
2、Click below icon to Add New Device



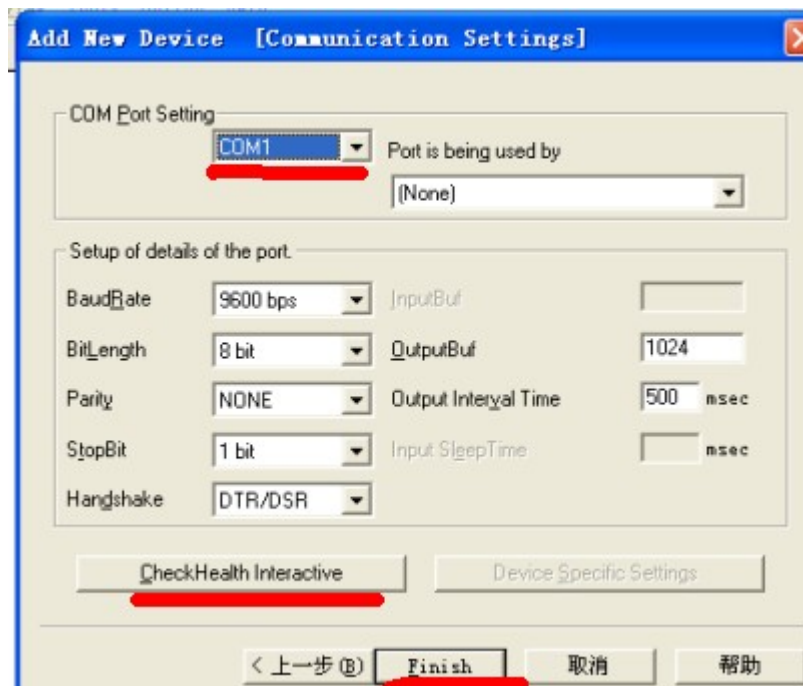
3.Select "LineDisplay", then "Next"



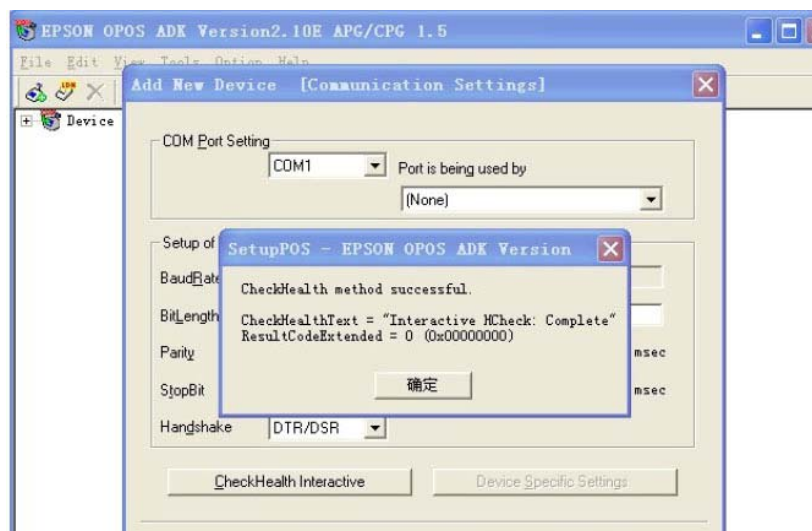
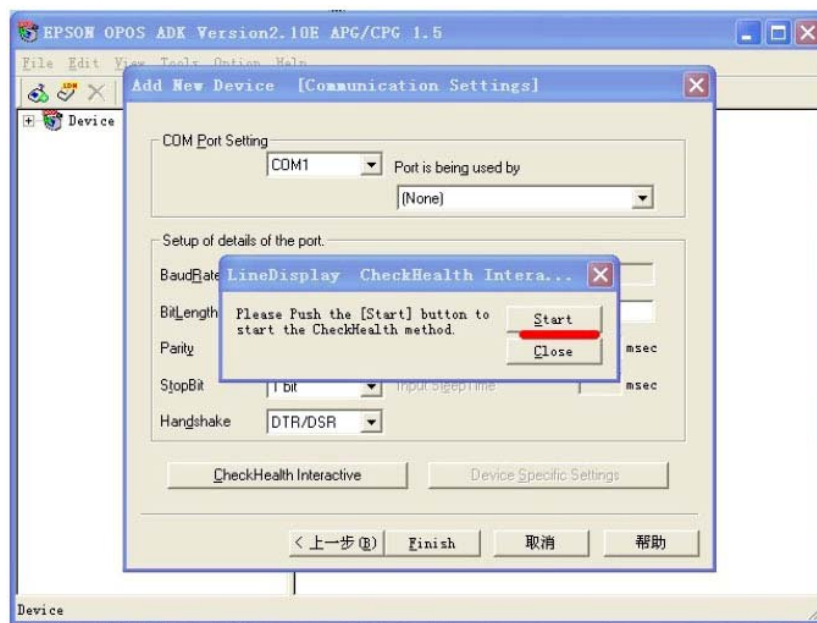
4. Please select device name “DM-D110”,and then input LDN,like”unit1”



5. Select the port setting, then click “CheckHealth Interactive”,



if no problem, it display “Start”



Step B: Back to your point of sales system application software, you can select the customer display device by LDN list, example:

